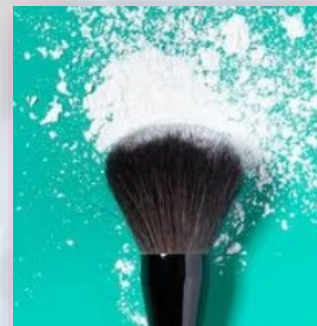


Corn Starch

INCI Name: Zea Mays (Corn) Starch

CAS Numbers: 9005-25-8



Description:

Starch obtained from corn and sometimes used as an absorbent in cosmetics instead of or alongside talc. Generally, in powders corn starch lends a silky but dry feel and some find it is better at absorbing excess oil without looking “cakey” like pure talc-based powders. Cornstarch is also used as a thickening agent in skin care products. Sensory screening indicates that Zea mays (corn) starch provides a unique powdery- dry, smooth skin after-feel, helps to control immediate and residual shine and oiliness, and reduces perceivable tackiness/stickiness. These features are beneficial in compact makeup applications as well as lotions and creams. Additionally, corn starch has been shown to possess anti-inflammatory benefits, soothing itchy skin and calming both rashes and burns.

Technical Data:

		MIN	MAX
Moisture	%	9.0	11.0
pH		3.5	7.0
CN US 100	%		1.0
RVA VISC 98C	CPS	600	1400
FM	PPM	0	10.0

Applications:

Corn starch is used in body/baby dusting and topical powders, cream powder, lotions, skin and hair masks, loose and compact makeup and bath salts. It may also replace talc mica, and fumed silica in powder cosmetic products.



McKinley Resources, Inc.

P.O. Box 810472 • Dallas, TX 75381

Phone: 972-620-9730 • Fax: 972-421-1860

info@mckinleyresources.com • www.mckinleyresources.com